

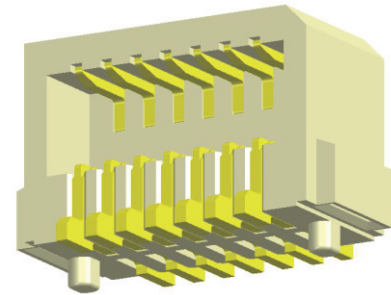
Board to Board

pitch 0.80mm (0.03") | Female | S.M.T. R/A | Locating peg

CBBC201 Series

Specifications

Current Rating : 0.5 Ampere
 Insulation Resistance : 500 MΩ Min
 Dielectric Withstanding : 200V AC
 Contact Resistance : 20 mΩ Max
 Operating Temperature : -40°C to +105°C

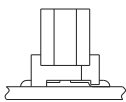


Materials

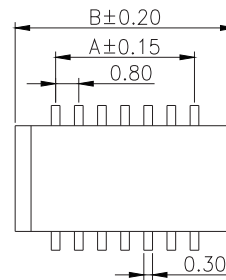
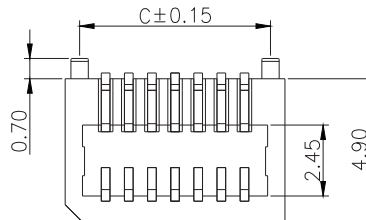
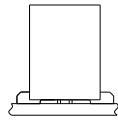
Contact Material : Brass
 Insulation Material : High Temperature Thermoplastic, 94V-0 Nylon

All materials must meet Greenconn's requirements for environmental protection.

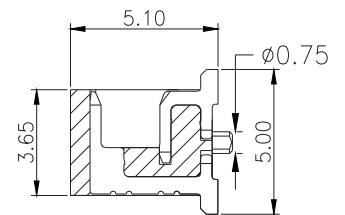
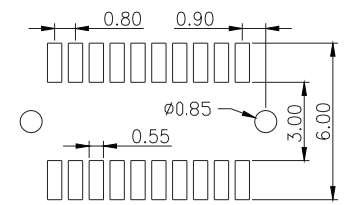
Mating with



A01



Recommended P.C.Board Layout



* For Coded Dimension Not Inside The Table, Please Refer To "Ordering Information"

| No. of Pins/Row | Dimension Information | | | No. of Pins/Row | Dimension Information | | | No. of Pins/Row | Dimension Information | | |
|-----------------|-----------------------|-------|------|-----------------|-----------------------|-------|-------|-----------------|-----------------------|-------|-------|
| | A | B | C | | A | B | C | | A | B | C |
| 05 | 3.20 | 6.00 | 5.00 | 11 | 8.00 | 10.80 | 9.80 | 21 | 16.00 | 18.80 | 17.80 |
| 06 | 4.00 | 6.80 | 5.80 | 12 | 8.80 | 11.60 | 10.60 | 22 | 16.80 | 19.60 | 18.60 |
| 07 | 4.80 | 7.60 | 6.60 | 13 | 9.60 | 12.40 | 11.40 | 23 | 17.60 | 20.40 | 19.40 |
| 08 | 5.60 | 8.40 | 7.40 | 14 | 10.40 | 13.20 | 12.20 | 24 | 18.40 | 21.20 | 20.20 |
| 09 | 6.40 | 9.20 | 8.20 | 15 | 11.20 | 14.00 | 13.00 | 25 | 19.20 | 22.00 | 21.00 |
| 10 | 7.20 | 10.00 | 9.00 | 16 | 12.00 | 14.80 | 13.80 | 26 | 20.00 | 22.80 | 21.80 |
| | | | | 17 | 12.80 | 15.60 | 14.60 | 27 | 20.80 | 23.60 | 22.60 |
| | | | | 18 | 13.60 | 16.40 | 15.40 | 28 | 21.60 | 24.40 | 23.40 |
| | | | | 19 | 14.40 | 17.20 | 16.20 | 29 | 22.40 | 25.20 | 24.20 |
| | | | | 20 | 15.20 | 18.00 | 17.00 | 30 | 23.20 | 26.00 | 25.00 |

Ordering Information

Standard Packaging : Tube

CBBC2 - B002D4BC
 Height Option (H) Standard No. of Pins per Row Standard Plating
 : Gold Flash